

crisalide

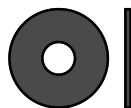
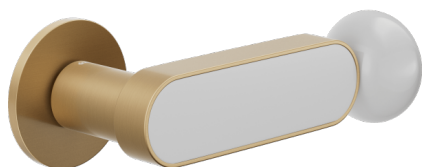
Maniglia su rosetta senza bocchetta

dnd



Prodotto e finitura selezionata: **CS40-ARO+PSW**

Rosetta



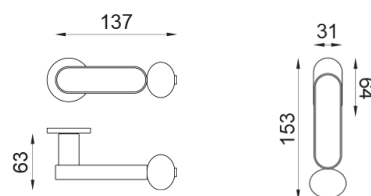
Fine Tonda
Ø 50 - 4 mm

Finiture disponibili



ANE+PSW ANE+PSD ARO+PSW ARO+PSD ABN+PSD ABC+PSD AVP+PSD

Specifiche tecniche



info@dndhandles.it
T + 39 0365 899113

